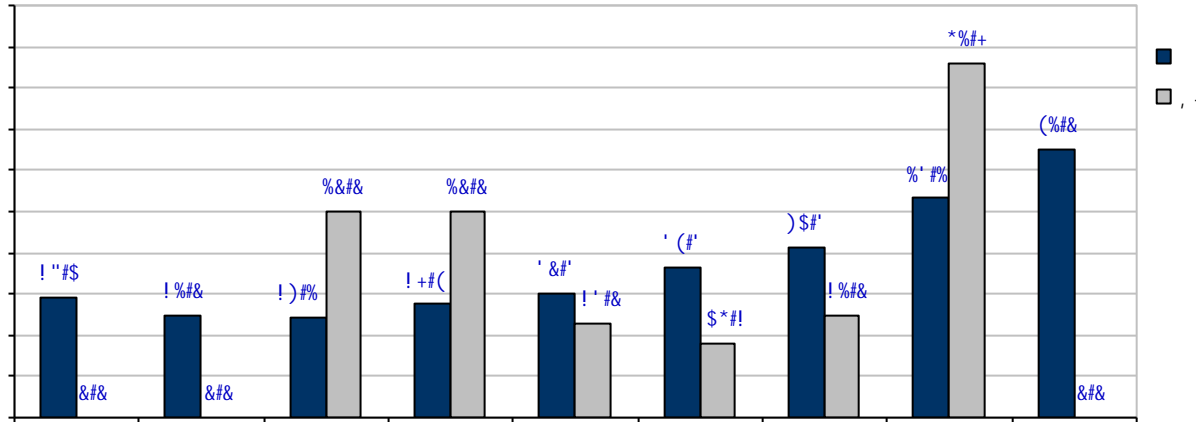


! "#\$%&' & (\$) \$* +\$, * - #. \$/ . \$&" # \$0. / & # 1 \$ 2 ' & / * .) \$ % # 3 4 # & ' 4 / & \$ 5 # 6 ' 4 & - # . &) \$

\$

! "#\$%&' & (\$) \$* +), #&, -&(). --&' #&) / " & O%, -" ((', #. 1& . # \$ & / ' 2 / " % & 3.) " 2, % " (



4% "#\$ (&' #&) / " & % " 5% " (" #).)', #&, -& 6, 7 " # & ' # &) / " & O%, -" ((', #. 1& . # \$ & / ' 2 / " % & 3.) " 2, % " (& 8 & 9: : : & , & 9: ; : &

During the period , from (1785 out of 5034) in 2000 to (3,945 out of 10,175) in 2010, the proportion of women increased by

Level	% of women as of 31 Dec 2000	% of women as of 31 Dec 2010	Total change 2000-2010
National	17.5	39.5	22.0
Regional	17.5	39.5	22.0
Country	17.5	39.5	22.0
District	17.5	39.5	22.0
Sub-district	17.5	39.5	22.0

50	65	15.0	1.5	0.0	0.0	0.0	0.0
----	----	------	-----	-----	-----	-----	-----

- As of 31 December 2010, women constituted:
- (3,945 out of 10,175) of all staff in the professional and higher categories with appointments of one year or more;
 - (207 out of 770) of all staff at the

* SEPARATIONS *

- in the professional and higher categories with appointments of one year or more separated out of a total of .
- Separations of women constituted: (1,607 out of 3,751) of all separations in the Professional and higher categories.
(72 out of 273) at the
(1,535 out of 3,478) at the
- _____: Women constituted (1,153 out of 2,601) of appointments expirations, (226 out of 529) of resignations, and (133 out of 359) of mandatory retirements.

* SEPARATIONS *

- Separations of women constituted: (11 out of 30) of all separations in the Professional and higher categories.
(0 out of 1) at the
(11 out of 29) at the
- Highest proportion: at the level.